

# Dovecotes in England:

## An Introduction and Gazetteer

by

M.J.A. BEACHAM

*A full country-wide survey of England's dovecotes is long overdue. Such a study may provide answers to several basic questions: how did dovecotes develop in England, at whose instigation, and when? Investigation of plan-types, nesting arrangements and other structural details may have an important bearing on these and other questions. Like many old buildings whose original use has gone, dovecotes in many places face a future which is uncertain. Their survival is often dependent upon local enthusiasts.*

### DEFINITION

Various names have been used indiscriminately for the buildings which formerly housed pigeons bred for the table: dovecot(e), *columbarium*, pigeon-house, pigeon-loft, even the medieval culverhouse. These breeding-houses fall naturally into two separate groups: those which are free-standing structures, and those which form a part of another building whose main purpose was other than the rearing of pigeons—such as a barn, or a church tower. It is proposed that the first group be termed *Dovecotes*, and the second *Columbaria*. This preliminary study is concerned with dovecotes only, and its accompanying gazetteer is restricted to the counties of England.

### PURPOSE OF THE STUDY

The last attempt at a national study of dovecotes, by A.O. Cooke in 1920, only—as he admitted—skimmed the surface of the subject.<sup>1</sup> It relates only to then extant examples, apart from Bosbury; not all counties are covered, and many have only two or three examples. A recent regional study by J. Severn gives bare details of some half-dozen, followed by a list of sixty other sites for which he gives the location only.<sup>2</sup> Using material published over the past one hundred years, including the late Professor Pevsner's indispensable *Buildings of England*, which is, however, strong on location and short on detail, this present work is intended as the first step in a complete survey of dovecote sites. The gazetteer will serve as both a basis and, it is hoped, a practical stimulus for further studies. Eventually a full description and history of all known dovecotes and former sites will be compiled, with a status report on those

---

Mr. Beacham is an amateur historian currently undertaking a survey of reputed tithe barns (vol. I published 1987, vol. II due autumn 1989); he is also preparing a calendar of glebe terriers for publication by the Somerset Record Society.

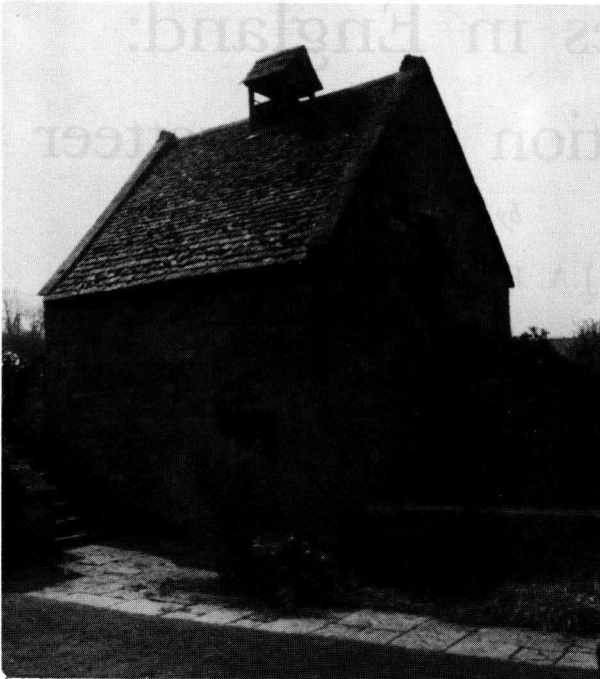


Fig. 1  
Snowhill Manor,  
Hereford and Worcester  
*P. Harris*

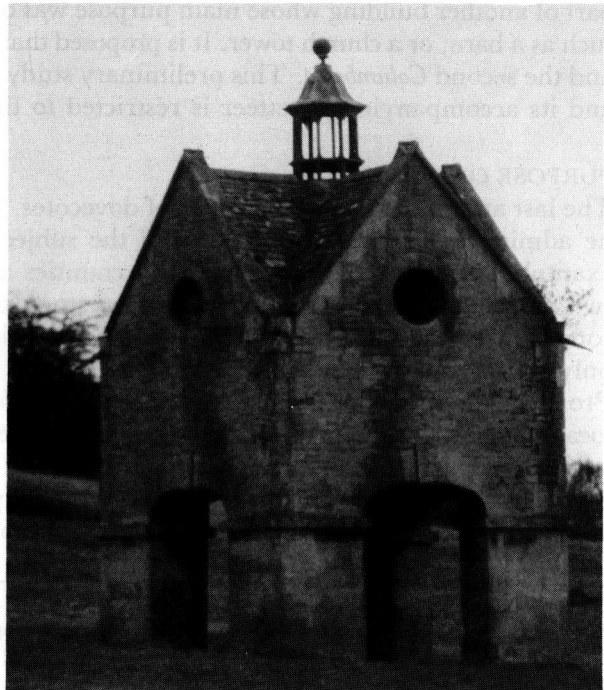


Fig. 2  
Chastleton, Oxfordshire  
*P. Harris*



Fig. 3  
Dormston, Hereford and Worcester.  
The lantern is not original  
*Avoncroft Museum of Buildings*



Fig. 4  
Hill Croome, Upton-upon-Severn,  
Hereford and Worcester.  
The only known cruck-trussed dovecot  
*Avoncroft Museum of Buildings*

extant concerning their current condition and prospects of survival. It is also hoped that a photographic record of each can be made and maintained for future workers in this area of vernacular architecture.

#### HISTORY

Pigeons provided three important things: eggs, meat and guano. In times when sufficient cattle could not be fed through the winter, a large variety of birds was eaten as a welcome alternative to salted meat.

Dovecotes are known in the east from Biblical times. They found their way to Britain either with the Romans, who built them extensively in Italy, or much later with the Normans. If the Romans introduced dovecotes nothing of their work survives. However, C.D. Chambers, in the early nineteen-twenties,<sup>3</sup> after deciding from known medieval remains what kind of foundations would be likely contenders, claimed to have identified from archaeological excavations three circular buildings which may have been dovecotes (at Hayling Island, Corbridge, and Silchester) and two octagonal dovecotes, at Great Whitcombe and Stroud. Since then little seems to have been done to extend Chambers's findings. This is all the more regrettable since, in 1947, Hornell pointed out that the great impetus for dovecote building came not from the Normans but from lords returning from the Crusades.<sup>4</sup> It certainly appears that the earliest surviving dovecotes can be dated to the late twelfth and early thirteenth centuries.

Whereas in Italy anyone might erect a dovecote, in France and England it was a jealously-guarded seigneurial privilege. Many manor houses retain at least the remains of their dovecotes, as do some older rectories and vicarages. In spite of this restriction of ownership, by the mid seventeenth century there were an estimated 26,000 dovecotes in England alone. This profusion was, and still is, reflected in the various street names (*le Culver Close*, Bristol, 1540, now called Culver Street), field names (*Dufhousefeld*, Layer Marney, Essex, 1331) and names of farms (Pigeonhouse Farm, Weston Beggard, H/Worc, 16th cent.).

With the advent of the turnip and other root vegetables for winter feeding of cattle in the eighteenth century, the practice of slaughtering and salting down meat was rendered unnecessary, as was the need to keep pigeons for the table. No more dovecotes were built after the early nineteenth century, except for Baring-Gould's monstrous example at Lewtrenchard. Some have thought the decline in dovecotes to have been accentuated by the decay of the medieval manorial system and the movement away from a life regulated by custom or by the lord's will. Landowners probably became progressively more reluctant to maintain flocks of pigeons in the face of continual and vociferous protest from those whose corn was eaten each year by the manorial pigeons whilst they themselves were forced to net woodcocks in a local glade, the origin of the many 'Cockshut Woods'.

#### CONSTRUCTION AND DATING

The earliest surviving dovecotes seem usually to be circular in plan: 'seem' because, when it comes to dating these buildings, never has the overworked generalization *medieval* covered such a lack of definite information. Although dovecotes and their produce and profits are mentioned in monastic account rolls at an early date, little



is noted regarding physical description or exact location. Like windmills, several successive dovecotes might occupy the same site, making positive identification very difficult.

Dating many early buildings, particularly such overtly vernacular ones as dovecotes, is all too often subjective. Materials for construction were invariably local (Figs 1-4). Plan-type, however, varies with date. Before about 1400, seventy-five per cent of currently known dovecotes were circular in plan (Figs 5 and 6). Between 1400 and 1650, although circular examples are still found, there is a preponderance of square and rectangular plans. From 1650 to 1800, rectangular and octagonal plans are the norm (Figs 7 and 8). Roof-type is influenced by plan. Square dovecotes have mostly pyramidal roofs, although some hipped and ridge types are found; circular and octagonal ones have conical roofs. Earlier examples had stone slate roofs, later ones, except in the Cotswolds, had tiles; a few were thatched.

Nest holes, arranged in tiers around the internal walls were either of stone, clay, chalk, or occasionally of wood. Two shapes predominated: L-shaped and oblong (Figs. 9 and 10). Both are found throughout the dovecote timescale. According to Cooke the earlier the dovecote, the more likely it is to be circular in plan, with walls as much as four feet thick, a domed roof, and a small access door for collecting the eggs, cleaning out, and so on.<sup>5</sup> It also seems likely, from some apparently early examples, that the 'traditional' arrangement of a centrally-pivoted ladder (or potence) to enable the tiers of nest holes to be reached was a later introduction. It is, in fact, rather puzzling that, according to the *O.E.D.* the term *potence* first appeared in this context as late as 1887, in an article in the *Journal of the Royal Archaeological Institute*, vol. XLIV, p. 112. This is the only step in the development of dovecotes, which otherwise seem to have emerged 'fully-fledged'. Those few with a bathing basin in the centre of the floor, and possibly a simple hole in the roof by which the birds entered and left, are probably the earliest in date. This point is, however, uncertain.

#### PRESERVATION

The size of the average dovecote is both an advantage and a disadvantage. It is small enough for the cost of repair work or restoration to be relatively low. Set against this advantage is the fact that few members of the public wish to travel miles just to look at a dovecote, especially as very few still serve their original purpose. Dovecotes in the best state of preservation are those belonging to great houses and manor houses. They form part of the ensemble of the great country house that visitors have travelled to see, and they survive because owners see them as part of the whole and maintain them as such. Some of these are found on estates administered by the National Trust, and their future seems assured. Some have been converted to other uses. Larger examples have become cottages, smaller ones have been turned into stores. They have at least been preserved as buildings. Unfortunately many dovecotes have become derelict, and either eventually collapse or are swept away as land is sold for development. Rectorial and vicarial dovecotes seem to have suffered particularly in this respect: the several periods of incumbent resettlement have led to devastation of parsonage dovecotes. Why should they be preserved when much bigger buildings desperately need time and money spent on them and can guarantee a bigger return



Fig. 5 (*above*)  
Kinwarton, Warwickshire  
*The National Trust*

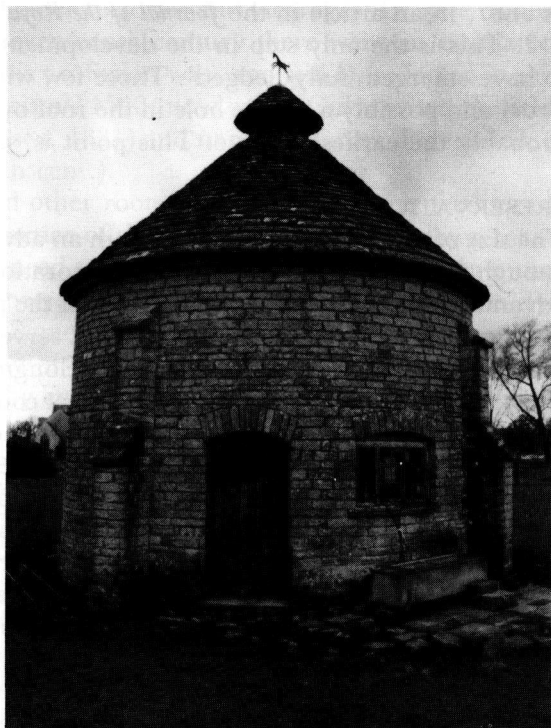


Fig. 6 (*right*)  
Lytes Cary Manor, Somerset  
*P. Harris*

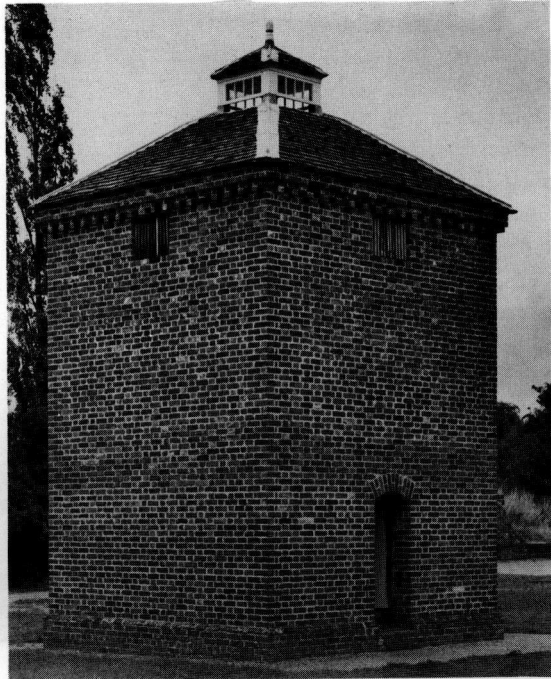


Fig. 7  
Haselour Hall, Staffordshire.  
Resited at Avoncroft Museum of Buildings  
*Avoncroft Museum of Buildings*

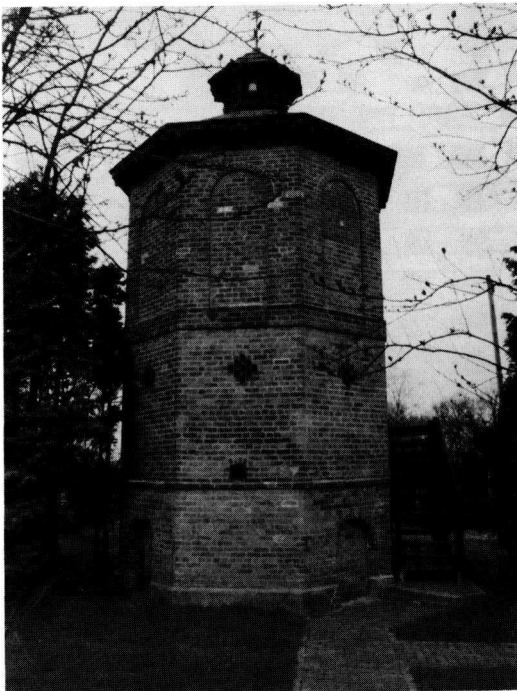


Fig. 8  
Moseley, Warwickshire  
*P. Harris*

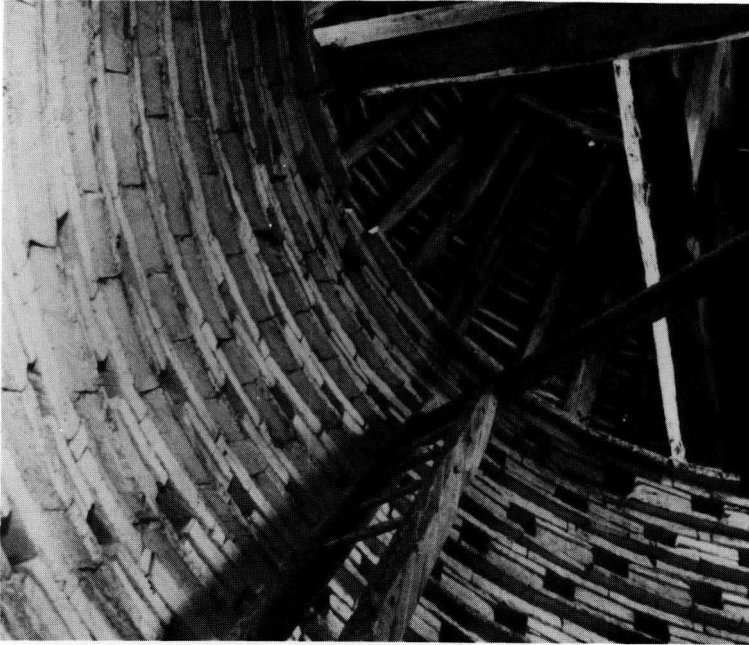


Fig. 9 (above)  
Kinwarton, Warwickshire  
*The National Trust*

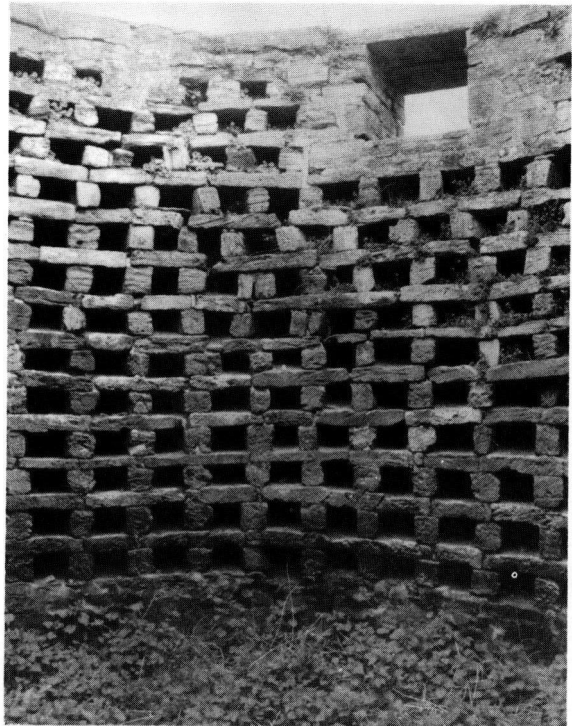


Fig. 10 (right)  
Stoke-sub-Hamdon, Somerset  
*P. Harris*

from tourism? A dovecote in good repair, with its nest boxes intact (and a few are still used, although usually by wild birds) is compact enough for a visitor to relate to in a very short time. The dovecote illustrates the social, economic, and dietary problems faced by all—by peer and peasant alike—until the late eighteenth century. Such problems and their solutions are better appreciated when one stands inside a dovecote, built by the same craftsmen who built the great abbeys and houses, than by reading of them or looking at photographs of buildings long ago demolished.

## REFERENCES

1. Cooke, A.O., *A Book of Dovecotes* (1920).
2. Severn, J., *Dovecotes of Nottinghamshire* (1986).
3. Chambers, C.D., 'Romano-British dovecotes', *Journal of Roman Studies*, 12 (1922), pp 189-93.
4. Hornell, J., 'Egyptian and medieval pigeon-houses', *Antiquity*, 21 (1947), pp 182-5.
5. Cooke, op.cit.



# Gazetteer

The preliminary handlist which follows has a large number of gaps; it is to be hoped that continuing survey will fill in many of these blanks. The list is printed in tabular form. The author would be pleased to receive information designed to add to or amend, the gazetteer.

## ABBREVIATIONS USED

Location: Ho (house) Fm (farm) Ct (court) Fmho (farmhouse)

Date: e (early)

Plan-type: S (square) R (rectangular) C (circular) O (octagonal) H (hexagonal) p (polygonal)  $\frac{1}{2}$ C (semicircular) Cruci (cruciform)

Material: R (rubble) S (stone) B (brick) F (flint) T (timber) W/B (weather-board) T/F (timber-frame) T/F(B) (timber-framed with brick infill)

Constructional details: g (gable) c-r (conical roof) p-r (pyramidal roof) h-r (hipped roof) lan (lantern) lvr (louvre) pot (potence) buttr (buttressed)

Dimensions: H (height) di (diameter) cir (circumference) i/d (inside diameter)

Nest boxes and shape: L (L-shaped) O (oblong)

Remarks: conv. (converted); N.T. (National Trust administered)

Kimwarton, Warwickshire  
The National Trust

Grid Reference	Location	Date	Plan-Type	Material	Construction Details	Dimensions in feet	Nesting Boxes and Shape	Remarks
<b>AVON</b>								
ST 542735	Abbots Leigh Bitton	by 1387	C	S				
ST 682691	(Church Fmho)	by 1323	S	S				Grade II
ST 701691	(Upton Cheyney)	16th cent.	S					Grade II
ST 80-84-	Little Badminton	?14th cent.	C	S	g r-r			
ST 65-77-	Mangotsfield (Rodway Manor) (Rodway Manor)	i by 1783 ii by 1783						
ST 77-73-	Marshfield (Home Farm)	?16th cent.	C	S	c-r			
ST 630910	Thornbury	?18th cent.	S	S	p-r			Demolished c.1968
	Widcombe (Manor Fm)	c.1730	O	B	3-storey			lower floor is a belvedere
ST 640810	Winterbourne (Court Fm)	?13th cent.	C	S	c-r; buttr			

Grid Reference	Location	Date	Plan-Type	Material	Construction Details	Dimensions in feet	Nesting Boxes and Shape	Remarks
<b>BEDFORDSHIRE</b>								
TL 146456	Ickwell Bury Lidlington	17th cent.		B				
TL 135192	Luton (Chiltern Gn Fm)	?16th cent.	S	T/F(B)				
SP 949519	Turvey Abbey	?15th cent.	R	S				
TL 107499	Willington (Manor Ho) (28 Church Rd)	c.1530 ?17th cent.	R R	S T/F	step-g		1500	NT 1914 conv(house)
<b>BERKSHIRE</b>								
SU 840850	Bisham Abbey	?15th cent.	C					
SU 876789	Bray (Ockwells Manor)	c.1465	C	B	buttr			
SU 236936	Coleshill (Coleshill Ho)	c.1660	C					Ho.Dem 1952-3
SU 34-77-	Eastbury (Pigeonhouse Fm) Hardwell (Hardwell Farm)	17th cent. 1307	O	F/B	p-r		999	
SU 822845	Hurley Priory	?1307	C	S	buttr; pot	23H 88 cir	600 (L)	
SU 38-99-	Longworth (Carswell Manor) Marcham	17th cent.	S C	S	4g			
SU 59-80-	Streatley (Place Manor)		C	S	pot	80 cir	350	
SU 64-74-	Sulham	?18th cent.	C	B	2-storey			d/cote part of a 'folly'
<b>BUCKINGHAMSHIRE</b>								
SP 952470	Astwood (Dove House)	?17th cent.	O	B				conv(house)
SP 707333	Buckingham (Bourton Ho)	16th cent.	R					
SU 931804	Burnham Abbey	16th cent.	S	B	thatch; h-r			
SP 95-02-	Chesham		C					
SP 90-51-	Clifton Reynes	?17th cent.	C		thatch; lan			derelict 1920
SP 765109	Dinton Hall	?17th cent.	C	S				
SP 97-19-	Edlesborough (Church Fm)	17th cent.	S	B				
SU 887889	Flackwell Heath (Pigeon Ho Fm)							
SP 85-42-	Great Linford (Rectory)	c.1500	S	S	p-r; lan			
SP 80-46-	Hanslope (Tathall End Fm)	1602	S	S				
SP 83-84-	Haversham	1665	S	S	p-r; cup			good rep. 1920
SP 79-02-	Horsenden	R	T	p-r;	2-storey			
TQ 00-79-	Langley Park	16/17 cent.		B				

Grid Reference	Location	Date	Plan-Type	Material	Construction Details	Dimensions in feet	Nesting Boxes and Shape	Remarks
SP 81-04-	Monks Risboro'	?15th cent.	S	S	lan			in decay 1942
SP 87-43-	Newport Pagnell (Chicheley Hall)	18th cent.	O	B				restored
SP 84-31-	Newton Longueville (Manor Ho)	16th cent.	R	T/F(B)				once T/F (plaster) fair cond. 1953
	Notley Abbey	14th cent.	S	S	h-r		4500	
SP 85-26-	Stewkley (Manor Ho Fm)	1704	O	B	c-r		1000	
	(Dovecote Fm)	16th cent.	R	T/F				
<b>CAMBRIDGESHIRE</b>								
TL 23-56-	Abbotsley (Manor Fm)	?16th cent.	R	T/F/B	on 8 piers		300 (rem)	poor 1974
	Barnack							
TF 07-05-	(Bainton Rd)	'WB 1789'	R	S	g; cup		700	
TF 08-05-	(Manor Fm)	?1700	R	S	g; cup		700	conv(house)
	Barrington							
TL 380490	(The Dove Ho)	c.1720	S	T/F/P	2-storey			conv(house) c.1820
TL 32-43-	Basingbourne (Clear Fm)	c.1750	S	B	lan		(rem)	conv(store)
TL 32-56-	Bourn (Chapman's Fm)	?18th cent.						remains only 1976
TL 195676	Buckden	?16th cent.		B				
TL 59-66-	Burwell (Crowland Fm)	19th cent.	S	S			650	
	('Hawcroft')	?18th cent.	S	S				conv(house) 1842
TL 585665	(Manor)	19th cent.	S	S	lan			conv(shed)
TL 12-98-	Castor (Village Fm)	?17th cent.	S	S	g; lan		300	
TL 292600	Caxton (Pastures Fm)	?18th cent.	R	B				conv(house)
TL 46-59-	Chesterton House	18th cent.	S	B				conv(garage)
TL 38-56-	Comberton (Cross Fm)	?17th cent.	S	T/F/P				conv(studio)
	(Hines Lane)	18th cent.	S	B				conv(house)
TL 40-58-	Coton (Rectory Fm)	?17th cent.	R	W/B	3-storey		300	
TL 24-59-	Croxton (Westbury Fm)	?17th cent.	S	B	p-r		300	filled in
TL 200645	Diddington (Boughton Lodge Fm)	?18th cent.	O	B	c-r; lan rem.			
TL 315635	Elsworth	17th cent.	R	T/F	2-storey thatched			
TL 53-79-	Ely (St John's Fm)	?15th cent.	S	S				

*Dovecotes in England*

Grid Reference	Location	Date	Plan-Type	Material	Construction Details	Dimensions in feet	Nesting Boxes and Shape	Remarks
TL 33-68-	Fen Drayton (Dove Ho)	18th cent.	S	B	p-r; lan (rem)			conv(house)
	(Ivy Cottage)	1775	S	B		15x15	500	ruinous 1974
TL 31-68-	Fenstanton (Grove Ho)	c.1820	C	B	4-storey	52H 60 cir	1000	demolished c.1960
TL 14-90-	Folksworth	?16th cent.		B				
TL 630697	Fordham Abbey	?1790	S	B	p-r; lan			
TL 42-45-	Fowlmere (Rectory Lane) (by church)	?17th cent.	R	T/F/P				conv(house) c.1850 demolished 1976
			S	B				
TL 41-48-	Foxton i	1706	S	B&W/B		20x20		
	ii	1706	S	S				conv(cattle pen) poor condition 1974
TL 24-52-	Gamlinghay (Blythe Fm)	?17th cent.	R	B			700	demolished 1974
TL 248521	(Merton Man Fm)	1280						
	(Merton Man Fm)	c.17th cent	S	B	g			
TF 15-06-	Glinton (Manor Fm)	1594	S	S			2500	roof collapsed 1975
TL 24-70-	Godmanchester (5 Ermine St) (Porch Fm)	?18th cent. ?16th cent.	R S	B B	2 chamb		3000	conv(bull pen) poor
	Grantchester (Manor Fm)	by 1436	R	T/F/P			3000	demolished
	(Manor Fm)	?18th cent.	R	T/F/P			3000	conv(house)
TL 430390	Great Chishill (Rectory Fm)	18th cent.	R	B	2-storey			conv(store)
TL 46-52-	Great Shelford (Graham's Fm)	17th cent.	S	T/F/P				conv(house) only lower portion is original
TL 138656	Great Staughton	?16th cent.	R	T/F/B				
TL 22-75-	Great Stukeley (Cartwright's Fm)	?18th cent.	S	B				conv(drying- shed)
TL 551577	Great Wilbraham (Temple End)	?18th cent.	R	T/F	thatch		(rem)	restored c.1970
	Guidden Morden (Morden Ho)	?17th cent.	R	T/F/B&P				conv(house) c.1840
TL 27-44-	(by school)	?17th cent.	S	T/F/P	p-r			conv(house)

Grid Reference	Location	Date	Plan-Type	Material	Construction Details	Dimensions in feet	Nesting Boxes and Shape	Remarks
TL 38-52-	Haddenham (The Elms)		S	B				conv(boiler-house) roofless by 1975
TL 40-52-	Hadlingfield (High St)	?17th cent.	C	B	c-r; cup	750 (L)		conv(house) c.1977
	(New Rd)	?18th cent.	S	T/F/P				conv(house)
TL 286665	Hilton Hall	c.1610	S	B	2-storey			conv(studio); 3 other demolished ruinous 1953
TL 04-75-	Keyston	?16th cent.	S	S			150	
TL 34-55-	Kingston (Crane's Lane) (Library Fm)	?18th cent. 18th cent.	S S	T/F/P T/F/P	2-storey			conv(house) conv(house)
TL 34-44-	Kneesworth (The Grange)	?18th cent.	S	T/F/B	p-r; lan		300	
TF 44-11-	Leverington (Beechwood)	?18th cent.	O	B	c-r		850	lan burnt 1970
TL 310430	Litlington (Bury Fm)	1682	S	B				formerly "Dovecote Manor"
TL 37-53-	Little Eversden (Five Gables Fm)	?17th cent.	S	T/F/P				conv(store)
TL 45-51-	Little Shelford (King's Fm) Long Stour	?17th cent. ?16th cent.	S	T/F/P B				conv(house)
TL 16-98-	Longthorpe (The Grove)	?17th cent.	S	S	2-storey	(rem)		conv(house) housed water pump
TL 372484	Malton	?18th cent.	S	T/F/W-B				
TL 372455	Meldreth (Chiswick End)	17th cent.	S	T/F/P	g			poor 1974
TL 44-80-	Mepal (Brangchill Lane) Newton	18th cent.	S	B				poor 1975
TL 434491	(Coach Ho Lane)	?17th cent.	R	B				conv(house)
TL 436491	(Manor Fm)	?17th cent.	C	F/C/R	cup		500	
TL 21-66-	Offord D'Arcy (High St)		S	B				demolished 1974
TL 30-77-	Oldhurst (Manor Fm)	1713	R	B	2-storey	(rem)		poor 1974 lwr floor a smithy
TL 168966	Orton Longueville (Rectory)	?17th cent.	S	S	p-r; thatch		800	restored 1950 (M.o.W.)
TL 268647	Papworth St Agnes (Manor Ho)	by 1600	S	B	p-r; lan	(rem)		conv(garden shed)





Grid Reference	Location	Date	Plan-Type	Material	Construction Details	Dimensions in feet	Nesting Boxes and Shape	Remarks
SW 498387	Bussow (Culver Ho)	?13th cent.	C	S	c-r			
SX 422685	Cothele	?13th cent.	C	S	domed roof; cup; buttr;	15 i/d	2999	NT; restored 1962
SX 36-54-	Crafthole	?13th cent.	C	S				
SX 23-58-	Duloe Vicarage	by 1727			slate roof			
SW 93-48-	Garlenich	1714	O	B	thatch	20H	200	
SW 92-71-	Halwyn	?13th cent.	C	S				
SW 44-24-	Lamorran Rectory	by 1727						
SX 17-57-	Lanreath Rectory	by 1679		S				
SW 91-63-	Nanswhyden Penheale	?13th cent.	C	S				
SW 85-42-	St Michael Pentival	?13th cent.	C	S				
SX 06-76-	St Tudy Rectory	by 1680						
SX 36-74-	Stoke Climsland Rectory	by 1680						demolished
SX 05-88-	Tintage (Vicarage)	?13th cent.	C	S				
SW 97-71-	Trevanion	?13th cent.	C	S	domed roof	18H; 11 i/d	130 (O)	good rep. 1920
	Trevena (Vicarage)	?13th cent.	C	S		13 i/d	200	
SW 99-65-	Withiel Rectory	by 1680						
<b>COUNTY DURHAM</b>								
NZ 457317	Elwick							
NZ 64-23-	Marske by the Sea		O	B	pot	24H walls 11	1000	
NZ 17-17-	Gainford Hall	1601	C	R	'beehive type'			
NZ 18-19-	Headlam House	17th cent.	C	R	double roof			roof caved in c.1968
	Heighington							
NZ 250240	(Heighington La)	?17th cent.	S	R	2-storey			roofless; entry by ladder
NZ 249209	(Coatsay Moor Fm)	17th cent.	C	S	buttr;			
NZ 365108	Middleton St George (Low Middleton Hall)	18th cent.	O	B	c-r			door bricked up; roof damaged
NZ 15-31-	Witton Castle	?18th cent.	C	A	2-storey			lower storey arched belvedere
<b>CUMBRIA</b>								
NY 15-42-	Aspatria	?17th cent.	S	S		12x12		Ruinous 1920
NY 51-18-	Bampton							

*Dovecotes in England*

101

Grid Reference	Location	Date	Plan-Type	Material	Construction Details	Dimensions in feet	Nesting Boxes and Shape	Remarks
NY 47-47-	Barrock Park Bradley field	17th cent.						
NY 18-47-	Bromfield (Crookdale Hall)	1686	R	S	2g	18x19 16H	(O)	conv(school) e19th cent.
	Bunker's Hill (Pigeon Cote Field)		C	S	cup	16 i/d	600 (L)	lower part cowshed
NY 40-56-	Carlisle (High Head Cas.)	18th cent.	0	S		side 7 (int.)		
NY 470541	Corby Castle i ii	1813	S C	S	pot	20x20	(L)	?demolished 18th cent. demolished 19th cent.
NY 30-50-	Crofton  Haverback Hutton i' th' Forest	c.1670	O	S	pot; lan		450 (L)	repaired c.1870
NY 41-27-	Hutton John	c.1600						
SD 49-81-	Milnthorpe (Nether Levens Fm) i ii		S S		p-r ridge roof	27x27 25H	filled in	
	Naworth Castle							demolished ?19th cent.
NY 14-39-	Parsonby Green		R				600	lwr pt coach-hse
NY 51-30-	Penrith (Gt Blencowe Fm) (Castle)	1789	S	S	p-r;2-storey	10x10 18H		demolished c.1890
NY 367470	Rose Castle (Bishop's Pal)	?16th cent.	S			19x19 20H	800(L)	
SD 32-77-	Underbarrow							
NY 443486	Wreay Hall Fm		O	S	pot		500	
<b>DERBYSHIRE</b>								
SK 32-77-	Holmesfield (Fanshawgate Hall Fm)	?17th cent.						
SK 392248	Melbourne Hall	1708						conv(muni- ment room)
SK 280143	Netherseal Hall	1686	H	B				
<b>DEVON</b>								
SY 29-98-	Axminster (Breweshayes)							
SS 55-33-	Barnstaple							
SX 838623	Berry Pomeroy							unable to locate 1988

Grid Reference	Location	Date	Plan-Type	Material	Construction Details	Dimensions in feet	Nesting Boxes and Shape	Remarks
SX 668466	Bigbury Court	?14th cent.	C	S	domed roof	15H 12 i/d	271(L)	
SX 487667	Buckland Abbey							demolished ?1792
SX 758459	Buckland T-S (Buckland Ho)		C	S/Cob	thatch	15 i/d		conv(game larder)
	Burcombe	1314	C					
SX 71-45-	Churchstowe (Norton Manor)	by 1534						monastic
SX 893688	Cockington Ct	?17th cent.						
SY 244921	Colyton (Great House, South Street)	17th cent.						
SX 37-79-	Dunterton							
SX 44-66-	Gawton							
ST 184045	Halsdon Ho.		S	B	p-r	21x21		removed
SS 260245	Hartland Manor							
ST 955191	Holcomb Rogus (Holcomb Ct)	?1553	C	S	c-r; lan			removed
SX 39-81-	Kelly House							
SS 665193	King's Nympton (K.N. Park)	c.1747	O	B/S		side 6		
SX 45-85-	Lewtrenchard (Parsonage)	c.1850	½C	S				
ST 268018	Membury (Yarty Ho)							demolished 19th cent.
SX 653518	Modbury (Old Traine Ho)	?16th cent.						
	Okenbury	?15th cent.	S	S			150(L)	ruinous 1956
SX 53-56-	Plympton St Mary (Hardwick)	?14th cent.	R	S	domed roof		360	roof of courses of oversailing stone slabs
SX 51-52-	Plymstock (Lower Combe)	by 1544						
SX 96-96-	Poltimore House							
SX 965846	Powderham Castle (Pigeon Vale)	?17th cent.	C	B	orig. thatch			removed conv(cottage) rectangular extension added
SX 749678	Pridhamsleigh Manor	?14th cent.	C	S	c-r; cup	15H 60 cir	250	restored 1976/7
SX 570509	Puslinch	17th cent.						
SX 651464	Ringmore (Castle Fm)		R		p-r			
	Smallacomb			B				
SX 97-64-	Staverton (Baddaford)		C	S	c-r	14 i/d	19	
SS 63-35-	Stoke Rivers (Ret'ory)	17th cent.	O	S	thatch			conv(apiary)

Grid Reference	Location	Date	Plan-Type	Material	Construction Details	Dimensions in feet	Nesting Boxes and Shape	Remarks
SX 246062	Tamerton Foliot (Warleigh Ho) Thorry	c.1600	C	B	cup;lan;pot	20H	500	
SX 686439	Thurlestone (Clanacombe) Uplozman	16th cent.	C	S	thatch repl. 1939	14 i/d 17H	275	
ST 070156	(Chieflowman)							
ST 07-15-	(Widhayes)	?17th cent.						
<b>DORSET</b>								
SY 579850	Abbotsbury Abbey	?14th cent.	R	S	2-cell	33x18		poor 1988
ST 699024	Alton Pancras (Manor Ho)	18th cent.	S	B		12x12	400	
SY 762949	Athelhampton Hall	c.1485	C	R/F	c-r;cup;lan; lan; pot; buttr	30 i/d	1000 (0)	roof not original some B repairs
ST 773022	Bingham's Melcombe	1664	C	B/R	c-r;cup	20 i/d	500 (L)	
SY 730865	Broad Mayne (Knighton La)	18th cent.	R	B		23x12	(rem)	
SY 636854	Corton Fm	17th cent.	S	S		22 1/2 x 22 1/2	600	ruinous 1988
SY 772974	Dewlish (Manor Ho)	1963	C	S		15 i/d		water pumping station
ST 859125	Iwerne Courtney (Shroton Fm)	17th cent.	R	S		28x23	500	
ST 721132	Lydlinch (Stoke Gayland Ho)	16th cent.	C	S	2-storey	20 i/d	(rem)	altered 17-19th cent.
SY 513950	Mappercombe Manor	1747	R	S		20x15	700	poor 1988
SY 504997	Mapperton Manor	1665	S	S		21x21	500	
SY 803972	Milborne St Andrew	18th cent.	R	B	?orig. 2-cell	27x23	600	roofless since 1949; ruinous 1988
ST 995083	Moor Crichel Ho	19th cent.	R	B/T	2-storey	10x6	100	weighbridge on ground floor
SY 804893	Moreton (Orchard Cottage) Netherbury	?18th cent.	O	B		20 i/d	(rem)	
SY 483985	(Melplash Ct) (Strode Manor Fm)	1604	C	S	c-r; pot; cup	15 i/d 12H	600 (O)	demolished c. 1970
ST 593167	Overcompton Ho	18th cent.	C	S		14 i/d	400 (rem)	
ST 705001	Piddletrenthide (Manor Ho)	18th cent.	C (base O)	S/F	cup;pot	16 i/d 40H	1000 (L)	ruinous 1988



Grid Reference	Location	Date	Plan-Type	Material	Construction Details	Dimensions in feet	Nesting Boxes and Shape	Remarks
SY 695714	Portland	16th cent.	R	S		6x6½	(rem)	
SY 535885	Puncknowle (Old Rectory)	?16th cent.	R	S		25x15 20H		n/boxes fossilized tree trunks
ST 621205	Sandford Orcas (Jerrald's Ho)	c. 1700	S	S	ext. steps	10x10	500	gnd floor a store
ST 388019	Thorncombe i ii	17th cent.	C C	S		14½ i/d	500	demolished c. 1970
ST 589185	Trent (Church Fm)	17th cent.	R	C	thatch	25x19½	500	
ST 658027	Uperne Manor	?18th cent.	R	S		20x30		conv(boiler-house)
ST 796266	Wyke (nr Gillingham) (Wyke Fm)	19th cent.	O	B		13 i/d		gnd floor granary
<b>ESSEX</b>								
TL 691262	Bradfield Saling (Woolpits Fm)		R	B	p-r; lan			
TQ 78-94-	Battlesbridge (Guymers Fm)	by 1700	O	B		sides 8	660 filled in	rebuilt as hexagonal conv (grain store)
TL 756254	Bocking (The Deanery)	16th cent.	S	T/F(B)	2-storey	30x30 30H	(L)	lowr pt conv(coach-house)
TL 787359	Castle Hedingham (Chelmshoe Ho)	1720	S	B			orig 1000 250 in 1920	
TL 565297	Chickney (Sibley's Fm)	15th cent. by 1411	S	T/F;W/B	thatched 2-storey			
TM 24-30-	Dovercourt (Dove House Fm) (Goodmayes Fm)	?19th cent.	R S	B B	2-storey p-r; lan 2-storey cup	16x16	55	
TQ 732951	Downham Hall Dunmow	18th cent.	O	B				
TL 637221	(Ford End)	?17th cent.		T/F(B)				
TL 651197	(Barnston Hall)	?18th cent.						
TL 865288	Earl's Colne (Priory Fm)	17th cent.	S	T/F				
TL 68-33-	Finchingfield (Oldbourne's Fm) (Spains Fm)		R	B	lan			conv(stable)
TM 028210	Fingringhoe Hall	18th cent.	R	B				
TL 81-38-	Gestingthorpe (Over Hall)	?17th cent.	R	T/F		16x15	removed	

*Dovecotes in England*

105

Grid Reference	Location	Date	Plan-Type	Material	Construction Details	Dimensions in feet	Nesting Boxes and Shape	Remarks
TL 673306	Great Bardfield (Hall)	16th cent.	S	T/F	cup	18x18	700 (L)	ruin 1929
TL 805331	Great Maplestead (Dynes Hall)	c.1600	S	T/F	p-r	18x18 20H		
TL 675137	Great Waltham (Fitzjohn's Fm)			W/B				
TL 76-38-	Great Yeldham		S	W/B	p-r; lan			
TQ 66-83-	Horndon on the Hill (Arden Hall)		R	B				
TL 916234	Mark's Hall	by 1700	O	B				
TL 525119	Matching Hall	?15th cent.	R	B				
TL 52-34-	Newport i		S	B				demolished by 1929
	(Martin's Fm) ii	16th cent.	R					
TL 52-34-	Newport iii (Monk Barns)			T				
TL 816239	Pattiswick Hall							conv (carpenter's workshop)
TL 657143	Pleshy Bury			T/F(B)				
TQ 55-78-	Purfleet (High Ho)	c.1709	O	B	g			
TL 515318	Quendon Hall		O	B				
TL 54-38-	Saffron Walden (Tiptofts Fm)	?16th cent.	S	B	one g	14x14	(L)	many nests lost
	(Wendon Lofts) Somers Heath	by 1700	O	B	pot; lan	25 dia	800 (L)	
TL 93-24-	Stanway (Olivers)		O	B				
TL 68-41-	Steeple Bumpstead (Bower Hall)		H	B	pot			
TL 935118	Tolleshunt D'Arcy (Hall)	16th cent.	S	B				
TQ 58-77-	West Thurrock (Hunts Fm)		R					demolished by 1930
TQ 66-77-	West Tilbury (Rochford Hall: Hall Fm)		C		thatched			demolished by 1930
TL 533336	Widdington (Ringer's)			W/B				
TL 836148	Witham (Little Braxted Hall)	c.1600	S	T				orig a kitchen
TL 650036	Writtle Park		C	B	c-r			conv(farm store)
<b>GLOUCESTERSHIRE</b>								
SP 244268	Addlestrop Pk	c.1825	S	R				
SO 71-11-	Arlingham (Manor Ho)	?14th cent.	C	R	c-r;lan			demolished ?c.1950

Grid Reference	Location	Date	Plan-Type	Material	Construction Details	Dimensions in feet	Nesting Boxes and Shape	Remarks
SO 930337	Ashchurch (Fiddington Manor)	1637	R	S	4g; cup;			
SO 91-16-	Barrington Park Bentham	18th cent.	C	S	2-storey			
SP 11-06-	(Bridge Manor Fm) Bibury			T/F	½h-r; lan			
SP 11-06-	(Old Vicarage)	16th cent.	C	S	lan			
SO 962278	Bishops Cleeve (Rectory)	?16th cent.	R	S	double d/cote			
SO 90-05-	Bisley (Jaynes Ct)	18th cent.	O					
SO 71-17-	Blaisdon	by 1839						
SP 17-32-	Bourton on the Hill							
SP 153208	Bourton on the Water							
SP 153384	(Manor Ho) Chipping Campden	16th cent.	C		c-r			
SP 02-01-	(Westington Ho) Cirencester	15th cent.	S	S	4g; lan		650 (L)	
SP 14-05-	(Barton Ho) Coln St Aldwyns		C		pot			
SP 14-05-	(Manor Ho)		S	R	4g; lan	23x23		conv(house) gd II
SO 995051	Daglingworth (Rectory)	?16th cent.	C	R	pot		550	
SP 084015	Eastington (Manor Ho)	15th cent.	C	R	c-r; lan			
SO 810312	Eldersfield (Pigeon Ho Fm)							
SO 96-12-	Elkstone	16/17 cent	R	S				
SP	Fairford (Park Fm)	c.1600	C	R	lan			
SP 137154	Farmington Lodge Forthampton	18th cent.	C	S	c-r			
	(Southfield Ho) Frampton on Severn	e18th cent.	S		4g; lan			
SO 750078	(Manor Fmho) (Frampton Ct)	1730	O	S	lan;		550	
ST 787030	Frocester (Frocester Court)	by 1515 (?13 cent)	R	S	2 chambers	42x23 12½H		ruinous
SO 972294	Gotherington (Manor Fm)		S		buttr			
SP 02-30-	Greet (Manor Fmho)	17th cent.	S		4g; lan			
SP 070004	Harnhill (Manor Ho)	18th cent.	S	S	h-r; lan			conv (summer- house)
ST 838979	Horsley Ct	17th cent.	S		g			
SO 67-29-	Kempley (Manor Ho)	c.1324						

Grid Reference	Location	Date	Plan-Type	Material	Construction Details	Dimensions in feet	Nesting Boxes and Shape	Remarks
SP 170226	Lower Slaughter (Manor Ho)	by 1658	R	S	6g; double	37x30		
SP 177260	Lower Swell (Bowl Fm)	?17th cent.						rebuilt
SO 86-00-	Minchinhampton	by 1839						
SP 118234	Naunton (Manor Ho)	15th cent.	S	S	4g; cup	24x24 18H	1175 (L)	restored 1949
SO 69-12-	Newnham	by 1717						
ST 74-95-	North Nibley (Millman's Fm)	c.1660	R	S	g			
ST 812898	Oldbury on the Hill (Saddlewood Fm)	17/18 cent	R		g			
SO 863105	Painswick Ho	by 1400	O					
SO 96-74-	Prestbury (The Priory)		S	S	lan			
SP 102043	Quenington Ct	?1338	C		pot			
SO 83-04-	Selsley (Stanley Pk)	1622	R	g;lan				
SP 17-14-	Sherborne Ho	?18th cent.						
SP 096339	Snowhill Manor	17/18 cent		S				
SU 015956	Somerford Keynes (Manor Ho)	18th cent.	S		g;lan			
SO 96-25-	Southam	by 1839						
SP 202034	Southrop (The Pines)	?16th cent.	R	S	4g;lan			
SO 062343	Stanton (Old Manor Fmho)	17th cent.	R	S	g;lan			
SO 783292	Staunton Ct		S	T/F				
SO 923285	Stoke Orchard (Mill Fmho)	?1741	R	B	g;lan			
SO 80-05-	Stonehouse	1709						
SP 086130	Stowell Park	17th cent.	R		g			
SP 091282	Temple Guiting (Manor Fm)	?16th cent.						
ST 884919	Tetbury (Close Fm)		C	S	c-r	18 i/d		
SO 89-32-	Tewkesbury (Holm Hill Ct)	by 1300						
SP 14-52-	Welford on Avon	by 1840						
SP 128407	Weston Subedge (Manor Ho)	17th cent.	S		4g;lan			
SP 032157	Withington (Manor Ho)	17th cent.	S		4g;lan			
ST 59-99-	Woolaston	by 1629						
<b>GREATER LONDON</b>								
TQ 31-65-	Beddington (Carew Manor School)	c.1715	O	B	cup;2-storey			
TQ 17-78-	Brentford (Boston Ho)	17th cent.		B				
	Carshalton House	c.1715	O	B	cup;2-storey			demolished 1906

Grid Reference	Location	Date	Plan-Type	Material	Construction Details	Dimensions in feet	Nesting Boxes and Shape	Remarks
TQ 38-93-	Chingford (Pimp Hall Fm)	17th cent.	R	T/F				demolished 1960
TQ 46-84-	Corbets Tey (High Ho)		R	T	p-r	16x14	386	conv(chicken coop)
	(Harwood)	c.1750	R	B	p-r;2-storey	24x16	filled in	conv (carpenter's workroom)
TQ 05-90-	Harefield (Brakespeare)	17th cent.		B				
TQ 30-81-	Holborn (Lincoln Pal) i	by 1547						demolished
	ii	by 1547						demolished
TQ 07-86-	Ickenham (Swakeleys)	17th cent.		B				
TQ 44-85-	Ilford (Padnall Grove Fm)			T/F	p-r;lan		removed	conv(hay silo)
	Kensington Palace	c.1710	O	B	cup;2-storey			demolished 19th cent.
TQ 18-69-	Kingston on Thames (Hoppingwood Fm)	?19th cent.	O	T				
TQ 28-68-	Mitcham (The Canons, Madeira Rd)	16th cent.	S	S/B/F				'much patched' (Pevsner)
<b>HAMPSHIRE</b>								
SZ 530860	Arretton (I.o.W.) (Manor Ho)	c.1629						
SU 663526	Basing (Basing Ho) i	?16th cent.			thatch			
	ii	16th cent.	O	B	c-r;lan	side 7	500(L)	
SU 336501	Hatherden (Pigeon Ho Fm)							
SU 72-01-	Hayling (Manor Ho)	?14th cent.						
SU 72-43-	Petersfield (Worlidge's Fm)	by 1668						
SU 485310	Winchester (Abbot's Barton Fm)							
<b>HEREFORD and WORCESTER</b>								
SO 33-51-	Almeley (Nieuport Ho)		O	B	lan	9 side		demolished 1893-1939



*Dovecotes in England*

Grid Reference	Location	Date	Plan-Type	Material	Construction Details	Dimensions in feet	Nesting Boxes and Shape	Remarks
	Amberley Ct		C	S				demolished c. 1840
SO 515644	Ankerden Ashton (Eye)	c. 1685	R	W/B	½ h-r; lan on brick piers	18x20		ruinous 1650 Gd II; removed from Berrington Hall
SO 66-48-	Bishop's Frome (Bromtrees Hall)	c. 1721	O	B	lan	7 side	(L)	demolished 1945-78
SO 416434	Bishopstone		O	B	lan	6 side		
SO 531511	Bodenham	18th cent.	O	B	ext. steps; lan	7 side	120 (L)	roof collapsed c. 1978
SO 69-43-	Bosbury (Bosbury Ho)	c. 1700	S	B	r-r; lan	15x15		demolished c. 1938
	(Temple Ct)	by 1289	C	S				demolished c. 1884
SO 910550	Bredicot	by 1650						
SO 47-39-	Breinton (Pigeon Ho Fm)		S	B				conv (farmhouse) demolished by 1893
SP 09-43-	Bretforton i	1630	R	S				1 wall rebuilt T/F
	ii	c. 1750	S					
SP 086442	(Manor Ho) iii	?14th cent.	S					
	(Manor Ho) iv	?16th cent.	S					
	Brimfield (Drayton)	?1830	S	B		11x11		demolished c. 1960
SO 929448	Broughton Hackett (Manor Fm)	17th cent.	R	T/F		16x14	1200	demolished by 1893
	Bunshill							
SO 48-44-	Burghill							
SO 482444	(Old Manor Ho)	1617	O	B	p-r; lan; pot	9 side 22H	625 (L)	Gd II
	(Hermitage Fm)	?c. 1750	S		p-r; lan	10x10	(rem)	
	(Burghill Ct)		O	B				demolished 1926
SO 392432	Byford Ho	c. 1685	S	T/F	p-r	18x18	(rem)	Gd II
SO 653436	Canon Frome Ct	c. 1750	O	B	p-r; lan; pot		522 (L)	new lan 1978
SO 45-49-	Canon Pyon (Lawton's Hope)		S	T/F	r-r; lan;	14x14		demolished by 1940
SO 887732	Chaddesley Corbett Hall		R	T/F/B	lan			poor 1984
SP 012456	Charlton Manor Ho			S	louvre			
SO 923536	Churchill (Manor Fm)		S	B	g(t/f)		600	poor 1976

Grid Reference	Location	Date	Plan-Type	Material	Construction Details	Dimensions in feet	Nesting Boxes and Shape	Remarks
SO 85-58-	Claines (Mildenhall Mills)	by 1650						
SP 089494	Cleve Prior (Manor Ho)	?15th cent.	C	S		60 cir	500 (L)	
SO 46-38-	Cleghonger Ct		S	B				demolished c.1880
SO 739427	Colwall (Barton Ct) Cotheridge	?14th cent.	C	S	c-r;O lan	14½ i/d	500 (L)	Gd II demolished 19th cent. Gd II
SO 450440	Credenhill Cot	18th cent.	O	B	p-r;lan	7½ side		
SP 001451	Croptorne (Manor Ho)	by 1650	R	2 T/F 2B	lan	28½x16	510	
SO 930564	Crowle i	by 1650						
SO 921559	ii	by 1650						
SO 48-49-	Derndale		C	S				demolished c.1872
	Dilwyn							
SO 413561	(Bidney Fm) (Lower Hurst)	17th cent. c.1680	S	T/F	r-r;lan 4g;lan	14x14 16x16	(rem) (rem)	Gd II Gd II
SO 393557	(Luntley Ct)	1673	S	T/F	4g;lan		500	
SO 48-49-	Dinmore (Manor Ho)		C	S				demolished c.1720
	Dormston							
SO 982574	(Bag End Fm) i	1413	S	T/F	g		560	
	(Bag End Fm) ii	?15th cent.	S	T/F			540	
SO 983573	(Moat Fm)	1652	S	T/F	p-r		720 (L)	Admin by Avoncroft Mus. of Buildings since 1972
SO 84-66-	Dunhampton Eardisland	?16th cent.	S C	S S		21x21	800	demolished by 1893
SO 422572	(Burton Ct)	18th cent.	S	T/F	r-r; lan	11x11	(rem)	Gd II
SO 417589	(Old Manor Ho)  (Porch Ho)	17th cent.  c.1700	S  S	B  B	4g; lan  4g; lan ext steps	20x20  20x20	  900 (L)	conv (cottage) Gd II
SO 31-49-	Eardisley (Eardisley Pk) (Bollingham Ho)	18th cent.	S	B	lan	20x20	300 (L)	Gd II
SO 866197	Elmley Lovett	17th cent.	S	B	p-r	9x9	(rem)	
SO 99-46-	Fladbury				pot			demolished 19th cent.
SO 455221	Garway (Church Fm)	1326	C	S	domed roof; no pot	17 i/d	666	built by Knights Hospitallers; cup added ?17th cent.
SO 627636	Great Kyre (Kyre Pk)		C	S	cup		500	

*Dovecotes in England*

Grid Reference	Location	Date	Plan-Type	Material	Construction Details	Dimensions in feet	Nesting Boxes and Shape	Remarks
SO 846427	Hanley Castle (Severn End)	?1673	S	S	pot			
SO 879745	Harvington Hall	c.1650		S				good 1973
SO 846607	Hawford	16th cent.	S	T/F	4g; lan	17x17		conv(coach-house)N.T. demolished c.1939
SO 49-35-	Haywood	?1690	S	B	p-r; lan	16x16		
SO 51-39-	Hereford (Moor Fm)	?1673	S	T/F	4g; lan	12½x12½		demolished c.1950
	(Newton Fm)		S	B				demolished c.1870
SO 887404	Hill Croome (Glebe Fm)		R	T/F	cruck			only known cruck d/cote ?monastic
SO 94-58-	Himbleton	by 1650						
SO 56-36-	Holm Lacy (Home Fm)	?c.1750	C	S	c-r;lan;pot	15 i/d		
SO 94-57-	Huddington Ct i ii		R	T/F				demolished 19th cent.
SO 85-48-	Kempsey (Manor Fm)	by 1650	R	T/F				
SO 435419	Kenchester (Old Weir)	18th cent.	O	B	p-r;lan;pot	7 side	320 (L)	demolished by 1893
SO 41-28-	Kenderchurch							
	Kimbolton							
SO 516610	(Stocktonbury) (Upper Bache Fm) (Lower Hamnish)	18th cent. ?1747	C	S S S	c-r;pot 4g	12 i/d 16x16	500 (L) 600	Gd II Gd II demolished by 1893 poor 1977
SO 577302	King's Caple Ct King's Pyon		S	S&B	p-r	15x15		
SO 442488	(Butt Ho) (White Ho)	1632 17th cent.	R S	T/F T/F/B	4g;lan p-r;lan;ext steps	12x11 14x14	500	Gd II Gd II
SO 30-57-	Kington (The Rodd) ii							
SO 66-32-	Lea (Castle End)	17th cent.	O	S	p-r	5½ side	180 (L)	Gd II
SO 71-38-	Ledbury (Ledbury Pk) (Underdown)	c.1710	R	B	p-r	11x14		conv(cottage) 19th cent. demolished by 1893
SO 784534	Leigh (Court Fm)	?19th cent.	S		pot			
SO 49-59-	Leominster (Broadward Hall) (The Upper Hyde)	1652	S O	T/F/B	r-r;cup			demolished c.1938  demolished by 1893

Grid Reference	Location	Date	Plan-Type	Material	Construction Details	Dimensions in feet	Nesting Boxes and Shape	Remarks
	Letton (Old Court Ho) (Pigeon Ho Fm)							demolished by 1893 demolished by 1893
SO 652233	Linton-by-Ross (Eccleswell Ct)	14th cent.	S	S	p-r	14x14	640 (L)	conv from tower demolished c.1820
	Litley		S	T/F	p-r			
SO 96-43-	Little Comberton (Manor Ho) (Nash's Fm)	by 1650	C	S	c-r	70 cir	500	good 1920
SO 44-54-	Little Dilwyn		R	S&B	p-r	17x14½	200 (L)	
SO 62-41-	Little Tarrington		S	B	p-r;lan	15x15		demolished 1893-1939 demolished c.1888
	Livers Ocle		S	T/F				
SO 517282	Llandinabo Ct Llangarron		S	S	p-r;lan	12x12	175 (L)	
SO 525219	(Llangarron Ct)	c.1775	S	B	p-r;lan;ext steps	12x12		
SO 512212	(Kilreague Fmho)		S	S	3-storey;p-r	9x9	(rem)	conv (garden store)
	Lower Bullington Fm		S	T/F				demolished by 1893
SO 55-41-	Lugwardine Madley	?17th cent.	S	T/F	lan	11x11		
SO 432412	(Magnolia Fm)	c.1710	S	B	p-r	11x11	200 (L)	conv(water tank) demolished 1893-1977 restored 1867
	(Webton)		S	S&B	r-r;lan	14x14		
SO 80-47-	Madresfield Ct	?18th cent.	C	B	c-r			
SO 426456	Mansell Lacy (Post Office)		S	T/F	4g	9x9		roof collapsed and overgrown by 1920 GD II
SO 51-47-	Marden (Wisteston Ct)		C	S				demolished 1872
SO 55-19-	Marstow (Pigeon Ho Fm)							demolished by 1893
SO 540646	Middleton-on-the- Hill (Nurton Ct)	?17th cent.	S	S		20x20	850	conv(cow (blocked) byre)

*Dovecotes in England*

Grid Reference	Location	Date	Plan-Type	Material	Construction Details	Dimensions in feet	Nesting Boxes and Shape	Remarks
SO 576384	Mordiford (Old Sufton)	17th cent.	O	S(faced with B)	c-r; O lan			lan replaced 1764
SO 615466	Much Cowarne (Cowarne Ct)	?c.1200	C	S	c-r;lan	18 i/d	340 (L)	Gd II; domed roof replaced 18th cent. demolished 1927/8
	(Whitwick)		O	B	lan	13½ side	432	
SO 661332	Much Marcle (Hellens)	1641	O	B	lan	7½ side	(rem)	lan replaced 1753
	(Old Vicarage)		S	B	p-r	16x16		conv(stables) 19th cent. conv(house) c.1970 demolished c.1860
	Noakes Ct		S	T/F				
SP 08-47-	North Littleton		S	T/F				demolished by 1893
SO 38-48-	Norton Canon		S	T/F				demolished ?c.1925
SO 90-59-	Oddingley	c.1600	R	T/F			600	
SP 05-46-	Offenham Ct i		S	T/F		20x20		
	ii		Oval	T/F		?9x10		poor 1920
SO 75-51-	Old Storridge Common							
SO 84-63-	Ombersley	c.1200	R	T/F				
SO 47-26-	Orcop (Pigeon Ho Fm)	?16th cent.	S	S		12x12	now 50	reduced in height demolished
SO 95-37-	Overbury	by 1650						
SP 130470	Pebworth (Manor Fm)	18th cent.		S&B				application to demolish 1987
SO 40-27-	Pontrilas Ct Preston Wynne	c.1685	S	T/F	p-r;lan	17x17	(rem)	Gd II demolished 1887
	Putson		S	T/F	r-r;lan	16x16		demolished 1889
SO 492698	Richard's Castle (Court Ho)	?14th cent.	C	S	lan;pot	16 i/d	630 (L)	?orig domed roof; Gd II base only
	(Town Hall)	?13th cent.	C	S		16 i/d	(L)	
SO 60-24-	Ross-on-Wye (Alton Ct)	?16th cent.	S	S	p-r;lan;ext steps	16x16	(rem)	Gd II
	(Pigeon Ho Fm)		C	S				demolished by 1893
	(Rudhall)		S	S				demolished c.1880

Grid Reference	Location	Date	Plan-Type	Material	Construction Details	Dimensions in feet	Nesting Boxes and Shape	Remarks
	Rowden Abbey	17th cent.	S	S				demolished c. 1860
SO 37-51-	Sarnesfield Ct							demolished by 1893
SP 02-38-	Sedgeberrow	by 1650						demolished
SO 401628	Shobdon Ct	18th cent.	O	B	p-r;lan;pot	9½ side	440	door re-set 1832; Gd II
SP								
	027609 Shurnock	by 1650						
SP 079465	South Littleton	?14th cent.	C	S	cup;pot	83 cir	650	poor 1920
SO 372595	Staunton Ct	?16th cent.	R	T/F		26x21		
SO 361611	Staunton-on-Arrow (Staunton Pk)	17th cent.	O	B		8 side	350 (L)	roof collapsed c. 1977
SO 61-40-	Stoke Edith (Home Fm)		C	S				demolished c. 1870
SO 52-56-	Stoke Prior (Bury Ho)		C	S	lan;pot	13½ i/d		demolished 1893-1978
	(Great Ho)	?17th cent.	S	S(faced with B)	p-r;lan	17½x17½	470 (L)	GD H
SO 53-58-	Stretford Ct		S	T/F				demolished c. 1870
SO 443419	Swainshill (Old Weir Fm)	18th cent.	O	B	p-r;lan	20H	400 (L)	N.T. (1959)
SO 62-41-	Tarrington (Aldersend)		C	S	lan;pot	16 i/d	576 (L)	bombed 1943
SO 634606	Thornbury (Netherwood)	?14th cent.	C	S	c-r;lan;pot	15½ i/d	650 (L)	Gd II
SO 46-45-	Tillington Ct		C	S				demolished by 1893
SO 332603	Titley (Eyewood)	?17th cent.	O	B		9 side	760 (L)	roof collapsed demolished 1950
SO 38-39-	Tyberton Ct		O	B		8½ side		
SO 56-50-	Upper Maund Common		S	T/F				demolished c. 1880
	Upper Wintercott		S	T/F				demolished c. 1870
SO 65-27-	Upton Bishop (Green Ct)		S	S&T/F		14x14		demolished 1893-1977
	(?)	?18th cent.	S	S	lan	10x10		
SO 360380	Vowchurch (Poston Ho)	?1700	O	B	pot	9 side	750 (L)	conv(garage)
SO 574216	Walford-on-Wye (Hill Ct)	c. 1700	O	B	lan	9 side		Gd II
SO 49-48-	Wellington (Stocks Fm)	18th cent.	O	B	pot;lan	8 side		
	(Kipper Knoll)	?17th cent.	S	S	p-r;lan	14x14	375	



Grid Reference	Location	Date	Plan-Type	Material	Construction Details	Dimensions in feet	Nesting Boxes and Shape	Remarks
SO 40-52-	Weobley (Priors Moor)							
SO 47-51-	Westhope Hill (Pigeon Ho Fm)							demolished by 1893
SO 589419	Weston Beggard (Pigeon Ho Fm)	18th cent.	O	B	p-r;pot	9 side	800	Gd II
SO 634237	Weston-under- Penyard (Bollitree Fm) (Dairy Cottages)	?c.1750	S R	S S	lan p-r	9x9 11x9		conv(water tower)
SO 87-52-	Whittington							
SO 788597	Wichenford Ct	17th cent.	S	T/F	lan			good 1988
SO 96-45-	Wick	?16th cent.	C	S	pot	75 cir	1300	
SP 06-41-	Wickhamford		C					
SO 41-69-	Wigmore Grange		C	S				demolished 1888
SO 82-79-	Wolverley	by 1650	S	B				conv(house)
SO 42-48-	Wormesley Grange							demolished by 1893
SO 612436	Yarkhill (Showle Ct)	17th cent.	C	B		17 i/d		roofless ruin
SO 474651	Yarpole (Home Fm)	c.1700	S	B	4g;lan	14x14	375 (L)	Gd II
SO 63-30-	Yatton (Rocks Place)		S	S				demolished 1893-1977
SO 414467	Yazor (Foxley)	18th cent.	H	B	3-storey;lan	11 side	200 (L)	Gd II
<b>HERTFORDSHIRE</b>								
TL 475245	Bishops Stortford (Farnham Rectory) (Bulstrode Park)	?16th cent. 18th cent.		T				conv(cottage) foundations only
TL 236385	Caldecote			S				conv(apple store)
TL 31-29-	Cottered		S	B				
SP 97-08-	Northchurch (Norcott Ct)	17th cent.	R	T/F(B)				
TL 147264	Offley (Westbury Fm)			T/F				
TL 14-31-	Pirton (Hammond's Fm)			T/F				
TL 15-07-	St Albans		O	T/F				conv(public house)
TL 32-34-	Sandon Bury			B				
TL 300250	Stevenage (Walker Manor Fm)		O	B	cup	side 12 20H 500	(O)	lwr pt now granary
TL 215275	Wymondley Bury (Hall Fm)		R	B	½h-r;g			

Grid Reference	Location	Date	Plan-Type	Material	Construction Details	Dimensions in feet	Nesting Boxes and Shape	Remarks
<b>HUMBERSIDE</b>								
SE 89-04-	Messingham (Chancel Fm)	19th cent.	R					
<b>KENT</b>								
TQ 752579	Allington Castle	?13th cent.	C	S	domed roof			
		?15th cent.	C	S	c-r;cup			
TR 10-54-	Chartham (Burnt Ho Fm)	c.1700	R	B	g;3-storey		574	
TQ 794584	Detling (East Ct)	17th cent.	S	B	p-r;cup	11x11 11H	200 (L)	
TQ 734533	East Farleigh	16th cent.	C	S		14 i/d 26H	232 (L)	
TQ 702571	East Malling (Paris Ho)	16th cent.		T/F				
TQ 82-53-	Leeds Priory (Abbey Fm) i	?15th cent.	R	B-clad S				ruin
		c.17th cent	R	B				ruin
TQ 67-66-	Luddesdown Ct							ruin
TR 052394	Mersham	1294						
TQ 558703	Sutton at Hone (Hawley Manor)	16th cent.	S					
TQ 75-54-	Tovil Green (Bydems Place)							
TQ 44-54-	Westerham (Squerries Ct Fm)			S				
TQ 99-47-	Westwell	1294						
<b>LANCASHIRE</b>								
SD 365184	Churchtown (Meols Hall) i		R		double bodied	28x24	?800 (L) 1	compartment ruinous in 1920 demolished c.1880
SD 496082	Dalton (Ashurst Fm)	c.1650	S					
SJ 40-98-	Kirkby (Whitefield Ho)	1703	S	S				
SJ 43-95-	Liverpool (Dovecot Ho, Knotty Ash)		R					demolished
SD 629142	Rivington (Moorland Gdn)	?19th cent.						
<b>LEICESTERSHIRE</b>								
SK 725230	Ab Kettleby (Manor Ho)	17th cent.						
SK 252110	Appleby (Moat House)	?18th cent.	S	S/B				removed. Poss. not a d/cote

*Dovecotes in England*

117

Grid Reference	Location	Date	Plan-Type	Material	Construction Details	Dimensions in feet	Nesting Boxes and Shape	Remarks	
SP 463927	Aston Flamville (Manor Ho) Baggrave	1715 by 1600	S	B		18x18	800		
SK 40-22-	Breedon on the Hill (Tonge Fm)	?16th cent.		T/F-S					
SK 84-05-	Brooke Priory (Priory Fm)	18th cent.	O					orig porter's lodge	
SK 485036	Desford (Old Hall Fm)	18th cent.		T/F					
SK 94-08-	Empingham		C	S			700		
SK 91-11-	Exton Park	?18th cent.	O						
SK 67-03-	Houghton on the Hill (Church Fm)	1716	R	B	g	20x16½	1000	derelict by 1959	
SK 97-04-	Ketton (The Priory)	?17th cent.			g				
SK 68-00-	Kings Norton (Manor Ho)	17th cent.		B					
SK 652120	Queniborough (The Hall)	1705		B					
TF 03-10-	Ryhall Hall	?17th cent.		S					
SP 65-92-	Saddington (Manor Ho)	18th cent.	S	B			600		
SK 387003	Shenton Hall	1769	S	B	g;pot				
SK 646156	Thrussington (Old Manor Ho)	1716							
SK 97-00-	Tixover (Manor Fm)	?18th cent.	R						
<b>LINCOLNSHIRE</b>									
TF 295447	Boston (Dovecote Fm)								
SK 98-18-	Castle Bytham Chalton	by 1800	C	S	pot				
TF 467668	Gunby Hall	c.1680	C	B	pot			N.T.	
<b>NORFOLK</b>									
TG 152081	Bawburgh	16th cent.	R	S				Not a d/cote, but a 'slipper house' for pilgrims	
TF 745010	(Oxborough Hall)			O					
TG 193394	Felbrigg Hall	c.1620	O	B	c-r; lovr			N.T.	
TG 047037	Hardingham Hall	?18th cent.	C						
TF 829207	Rougham	c.1660	O	B	thatch				
<b>NORTHAMPTONSHIRE</b>									
TL 02-95-	Apethorpe	17th cent.	C		cup				
SP 573683	Ashby St Ledgers			R					

Grid Reference	Location	Date	Plan-Type	Material	Construction Details	Dimensions in feet	Nesting Boxes and Shape	Remarks
SP 90-75-	Burton Latimer	17th cent.	R	S				
SP 92-77-	Cranford St Andrew	?15th cent.	C					
SP 73-62-	Dallington Hall	c.1720	O	S	cup;oct/lan		1300	derelict 1920;
SP 83-58-	Denton	17th cent.	C	S	cup			roof repaired c.1850; still in use 1920
SK 98-00-	Duddington Manor	16th cent.						
SP 773431	Furtho	15th cent.	C		c-r			
SP 70-64-	Harleston i	c.1425	C	S	oct/lan	15H		
	ii	c.1625	R	S		23x21 16H		
SP 69-71-	Hollowell (The Laurels)		C					
SP 88-74-	Isham	17th cent.	R	S				in good repair 1920
TL 00-97-	King's Cliffe (Rectory)							
SP 760645	Kingsthorpe (Home Fm)		R					
SP 75-74-	Lampport	1735						conv(i— bakehouse); ii—cottage)
SP 840664	Mears Abbey	1637	R	S	g;lan		550	
TL 062962	Nassington	17th cent.	R	S				
SP 523370	Newbottle (Manor Ho)	18th cent.	O	S/B	lan			
SP 996655	Newton Bromswold (Manor Ho)							
SP 88-83-	Newton in the Willows (Old Tresham Manor Ho)	c.1550	R	S	double bodied 2 lans	54x24 35H	4000	
SP 85-72-	Orlingbury Hall							
SP 71-56-	Rothersthorpe	?17th cent.	C			20 di	900	
SP 84-82-	Rushton Hall Stowe IX Churches (Manor Fmho)	?17th cent.	R		g			
TL 00-83-	Wadenhoe		C					
TL 909899	Warmington	17th cent.	C		cup;pot			
SP 89-68-	Wellingboro' i	?13th cent.					? 500	monastic; ?demolished
	ii	?13th cent.					? 500	monastic; ?demolished
<b>NOTTINGHAMSHIRE</b>								
SK 859523	Barnby in the Willows (Dovecote Fm)		C	S/B	c-r	15H 63 cir		
SK 523327	Barton in Fabis (Manor Fm)	1677	O	B			1200	
SK 766902	Beckingham (Pear Tree Fm)							

*Dovecotes in England*

119

Grid Reference	Location	Date	Plan-Type	Material	Construction Details	Dimensions in feet	Nesting Boxes and Shape	Remarks
SK 706397	Bingham (Long Acre)		S		r-r			
SK 708500	Bleasby	1736	S	B	p-r;3 lans	22½ x 22½	67	restored 1987; Gd II
SK 626869	Blyth							
SK 586310	Bradmore (Tofts Fm)							
SK 65-44-	Bulcote Bulwell	1738		B				
SK 526460	(Blenheim Fm)	?17th cent.	R	S	ext. steps			
SK 539452	(Commercial Rd) Bunny							
SK 583295	(Rancliffe Arms)							
SK 73-83-	Clarboro' (Welham Grange)							conv(house) demolished
SK 73-88-	Clayworth	c.1700						
SK 547348	Clifton Nottingham (The Green)	18th cent.	R	B	2-cell	38x18	2300	Notts City Council
SK 835545	Coddington (Old Manor Fm)	c.1700	R	B	g			conv(house)
SK 827615	Collingham (Manor Ho) (Yew Tree Fm)							demolished ?c.1980
SK 701332	Colston Bassett (Manor Fm)							
SK 798617	Cromwell							
SK 682355	Cropwell Bishop (The Creamery)							
SK 683372	Cropwell Butler (The Ct)							
SK 778738	Darlton (Church Fm) Eakring							
SK 673623	(Walnut Tree Fm)							
SK 666640	(N.Laiths Fm) East Bridgford	19th cent.	C	S	c-r;3-storey		297	
SK 699435	(Mulberry Close)							
SK 692431	(Church Cottage) East Leake							
SK 553263	(Old Hall Fmho) East Markham							
SK 744729	(Bettes Leys)							
SK 740730	(College Fm)							
SK 740730	(The Mount)							
SK 744728	(Woodward Fm) Elston							
SK 760478	(Top Street) Epperstone	?18th cent.						
SK 655483	(Grove Fm)		R		g			
SK 651485	(Manor Ho) Everton							



Grid Reference	Location	Date	Plan-Type	Material	Construction Details	Dimensions in feet	Nesting Boxes and Shape	Remarks
SK 647566	(Northfield Fm) Farnsfield							
SK 692913	(Combs Fm)							
SK 736511	Fiskerton Flintham							conv(cottage)
SK 742459	(Cottage Fm)							
SK 739460	(Flintham Hall)		S					at centre of aviary building
SK 741459	(Manor Ho) Gedling							
SK 619424	(Dovecote Fm)							
SK 680476	Gonalston Greasley							conv(house)
SK 495485	(Beauvale Manor Fm) Gringley on the Hill	?16th cent.						
SK 737910	(The Homestead)							
SK 740907	(The Manor)							
SK 735906	(The Vicarage) Halam							filled in
SK 674540	(Halam Ho)							
SK 681558	(Goldhill Fm) Halloughton							
SK 690518	(Manor Ho)							
SK 688516	(Yew Tree Ho)							
SK 752433	Hawksworth Manor Hayton	1655	R	S	p-r			
SK 728851	(Blyth Fm)							
SK 729841	(Church Fm)							
SK 690287	Hickling							
SK 714566	Hockerton (Grange Fm)							
SK 595863	Hodsock Laxton							conv(cottage)
SK 726641	(Mainwood Fm) Linby							
SK 534518	(Linby Hall Fmho) Mattersey Thorpe	17th cent.	R		g			
SK 683899	(Bleak Ho Fm) Misson							
SK 692951	(Gibdyke Lane)							
SK 688949	(West St)							
SK 690948	(Willow Ho) Misterton							
SK 766947	(Elm Fm) Morton							
SK 725514	(Manor Ho)	?17th cent.	S	B		17x17		
SK 730514	(The Poplars)							
SK 516231	Normanton on Soar (Manor Ho)	?15th cent.	R	S	g			altered in 17th cent.
	Normanton on Trent							



Grid Reference	Location	Date	Plan-Type	Material	Construction Details	Dimensions in feet	Nesting Boxes and Shape	Remarks
SK 790685	(The Grange) North Leverton							
SK 784821	(Corner Fm)	e19th cent.						
SK 787822	(High Street)	18th cent.	R		g			
SK 75-86-	North Wheatley Norwell							
SK 777618	(Hall Fm)							
SK 769617	(School Ho Fm) Huthall							
SK 516444	(The Yews)							conv (summer-house) conv(house)
SK 772410	Orston							
SK 630518	Oxton Papplewick							
SK 574518	(Forest Fm) Ranskill	19th cent.						
SK 655878	(Blyth Rd) Scrooby							
SK 652909	(Low Fm) (Manor Ho Fm)							
SK 63-89-	Serlby							
SK 653909	(Serlby Hall)							
SK 765455	Sibthorpe	?13th cent.	C	S	c-r	60H 31 di	1260	
SK 786699	(Skegby Manor) South Leverton							
SK 782811	(Retford Rd)		R	B	g			
SK 785812	(Whites Fm) South Scarle							
SK 847642	(Beeches Fm)		S	S	p-r			
SK 847639	(Hall Fmho) Southwell	?14th cent.	R		p-r			roofless
SK 688536	(The Burgage) (Westhorpe Hall Fm) Staunton in the Vale							demolished
SK 799450	(Staunton Grange) Sutton Bonnington	17th cent.		B			1100	
SK 503256	(White Ho) Sutton on Trent		S		p-r			
SK 798645	(The Pines)							
SK 739480	Syerston Hall Thoroton		S	S	p-r;lan			
SK 763423	(Ransons Fm) Thrumpton	?14th cent.	C	S	thatch			ruin
SK 510311	(Church Fm) Tithby							
SK 699370	(Church Fm)							
SK 700369	(Holly Tree Fm) Tuxford							
SK 736708	(Egmanton Rd) Upper Broughton Upton				cob			coll. 1771

Grid Reference	Location	Date	Plan-Type	Material	Construction Details	Dimensions in feet	Nesting Boxes and Shape	Remarks
SK 735543	(Cross Keys Inn)	c.1700						
SK 739544	(North Ho)							
SK 670660	Wellow Wilford							
SK 566377	(Rectory) Wollaton	c.1720	R	B	r-r			
SK 523397	(Dovecote Drive)	1585	R	B				
SK 531393	(Wollaton Park) Woodboro'							
SK 633477	(Gladstone Ho) Worksop							
SK 572788	(Manor Cottage Fm)							
SK 570780	(Worksop Manor)							
<b>OXFORDSHIRE</b>								
SU 631921	Benson (Bifield Manor)	1767	S	S				ruin
SP 58-22-	(Palace Yard) Brightwell Baldwin	17th cent.	S					
SU 652953	(Brightwell Park)	c.1650	Cruc	S/B				
SP 248290	Chastleton Ho	1602	R	S	rg;cup;lan	26x24		raised on pillars
SP 28-01-	Clanfield (Northcote Fm) Clattercote (Priory Fm)	18th cent. ?14th cent.	R S			g;lan 3-storey		
SP 272272	Cornwell (Manor Ho)	17th cent.	S			h-r;lan		
SU 502951	Culham (Manor Ho)	1685	R	B/S	g		4000	
SP 456286	Duns Tew (Manor Ho)	17th cent.	C	S	c-r			
SP 583020	Garsington (Manor Ho)	17th cent.	S		h-r			
SP 628024	Great Milton (Manor Ho)	17th cent.	C		c-r			
SP 350315	Great Rollright (Duck End)	16th cent.						
SP 399291	Great Tew Park	c.1700	O		lan			
SU 632850	Ipsden Ho	?17th cent.	C	B/F	c-r;lan			
SU 251990	Kelmscott (Manor Fm)	c.1700			g;turret			
SP 412228	Kiddington (The Hall)		C	S	pot;lan	20 di	400(L)	
SP 49-14-	Kidlington (Rectory Fm)	16th cent.	C	S	c-r			
SP 49-19-	Kirtlington (Northbrook Ho)	18th cent.		B				house is ruinous
SP 57-17-	Merton (Manor Fm)	?17th cent.		R	p-r			ruin
SP 413348	Milcombe Hall	e18th cent.	O	S	h-r;cup;lan	side 9	800 (0)	

Grid Reference	Location	Date	Plan-Type	Material	Construction Details	Dimensions in feet	Nesting Boxes and Shape	Remarks
SP 324115	Minster Lovell Hall	c.1440	C	S	c-r;cup		680	
SP 42-02-	Northmoor (Rectory Fm)	16th cent.	R	T/F	4g;cup	25x?		
SP 420395	North Newington (Park Fm)	17th cent.		B				
SP 476244	Rousham Park	1685	C		pot		744	
SP 419268	Sandford St Martin (Sandford Park)			S				
SP 26-08-	Shilton (Manor Fm)	?14th cent.	C	S	c-r			
SP 27-17-	Shipton under Wychwood (Shipton Ct)	17th cent	S		rg			
SU 59-88-	South Stoke (Manor Fm)	17th cent.	S	B	4g			
SP 614982	Stadhampton (Ascott Park) Stanton Harcourt	?16th cent.	O	B/S				
SP 403059	(Manor Ho) (Parsonage) Tackley	?17th cent. 1675	R S		h-r p-r;lan;pot		350	
SP 474211	(Hill Ct)	?17th cent.						ruin
SP 493210	(Manor Ho) Tusmore House	17th cent. 16th cent.	R		rg			
SP 22-09-	Westwell (Manor Fm)	17th cent.	C					
SP 416416	Wroxton Abbey	1744	P					former battlements removed
SP 47-08-	Wytham		S	T/F rendered	p-r;cup			

**SHROPSHIRE**

SO 510867	Aston Munslow (White Ho)	?12th cent.	C	S	walls 4ft thick	15H 75 cir	500	roofless 1920
SJ 68-02-	Bentnell Hall							
SJ 60-02-	Broseley (Rowton Hall) Dunthill Hall Golding			S O O			18x18 30H	1000
SJ 59-01-	Harley (Rectory)			S B				
SJ 61-28-	Hodnet	1656		S				
SJ 27-21-	Llanymynech							demolished by 1910
SO 539760	Ludlow (Henley Hall)	c.1570	O	B	pot;lan	15H side	10 600	
SJ 62-00-	Much Wenlock (Bourton Hall) (Shipton Hall) (Ticklerton Hall)			S S C S		18x18 20H		conv (storehouse) ruinous 1920
SO 60-71-	Nash (Ct of Hill)	17th cent.	O		lan			

Grid Reference	Location	Date	Plan-Type	Material	Construction Details	Dimensions in feet	Nesting Boxes and Shape	Remarks
SJ 75-19-	Newport (Chetwynd Ho)		O	B	pot;lan	side 7	600	
SJ 49-12-	Shrewsbury (Whitehall)	c. 1580	O	B	pot;cup		500	on site of demolished monastic d/cote
	Thonglands	?14th cent.	C	S			250	ruin 1920; no provision for potence demolished c. 1910
SJ 79-07-	Tong Castle							
SO 578736	Whitton (Whitton Hall)	c. 1725	C	B	lan			
SJ 40-10-	Yockleton (The Lynches)	16th cent.	C	B	pot	53cir		
<b>SOMERSET</b>								
ST 680348	Bruton Abbey	?16th cent.	R	S	4g			N.T. 1915
SS 990440	Dunster Priory	?12th cent.	C	S	pot	19H 19i/d	540 (irreg)	altered 14th and 16th cents
ST 265363	Durleigh (West Bower Manor Ho)	17th cent.	C	Cob	thatch; lan	13H 12 i/d	730	collapsed 1967
ST 695669	Kelston (Manor Fm) Kingston (Manor Ho)	16th cent.		S	4g			
SS 91-44-	Luccombe (Blackford Ho Fm)		C	S	domed roof			
ST 529269	Lytes Cary	?16th cent.	C	S	p-r			water pumping station
	Meare							
ST 45-41-	(Manor Ho) i	?14th cent.						demolished 1827
	ii	?14th cent.						demolished 1827
ST 77-62-	Monkton Combe (Church Fm)	16th cent.	S					
ST 77-55-	Norton St Philip	?16th cent.	C	S				
ST 466157	Norton sub Hamdon	15th cent.	C	S	c-r;cup;buttr	15H 13 i/d	400 (O)	repaired 1785
	Orchard Wyndham	?16th cent.	C	S				demolished
ST 41-38-	Shapwick Ho		H	S				
ST 592405	Stogursey (Priory Fm)	?13th cent.	C	S	c-r;thatch	18H 15 i/d	most filled in	conv(game larder)

*Dovecotes in England*

125

Grid Reference	Location	Date	Plan-Type	Material	Construction Details	Dimensions in feet	Nesting Boxes and Shape	Remarks
ST 479170	Stoke sub Hamdon (Priory Fm Clo)	15th cent.	C	S		16H 15 i/d	500 (O)	roofless 1920
ST 480343	Street (Ivythorne Manor)	?1578	R		g	31x22	500	part altered to barn; originally more n/boxes
ST 59-40-	Wells (The Mountroy)	c.1250						demolished
ST 578246	West Camel (Rectory Fm)	?15th cent.	C	S	pot; buttr	15 i/d	700 (L)	dilapidated
ST 74-41-	Witham Friary	?14th cent.	R	S	buttr	31x13 20H	? (L)	conv(parish room) by 1920

**STAFFORDSHIRE**

SJ 81-31-	Brocton Hall	by 1611	O					
SJ 97-10-	Cannock (Leacroft Old Hall)	?c.1700	O	B				demolished
SJ 862068	Chillington Hall	c.1730	O	B	cup			
SK 263097	Clifton Campville (Manor Fmho)			S				
SK 195138	Croxall Hall	?17th cent.		S	cup			
SO 82-86-	Enville (Rectory) Kinver (The Hyde)	by 1592 by 1528						
SJ 87-12-	Lapley (Lapley Hall Fm)	by 1291						
SK 062322	Loxley Hall	17th cent.	O	B				
SJ 992225	Shugborough Ho Statfold Hall	1571						conv
SJ 88-50-	Stoke on Trent (Ford Gn Hall) Tettenhall			S	B			
SJ 894024	(Barnhurst Fm)	?16th cent.	O	B				derelict 1980
SJ 852018	(Wrottesley Hall)	by 1294						N.T.

**SUFFOLK**

	Badley Hall	17th cent.						
TL 85-64-	Bury St Edmunds Abbey	?13th cent.	H	S		side 10		ruinous ?not a dovecote
TM 304857	Easton Park Flixton Hall	17th cent.	½C	B	cup cup;pot			hall largely demolished
TM 315605	Framlingham (Parham Hall) Henham Hall	?15th cent. ?18th cent.	O	B	lan			hall demolished c.1960

Grid Reference	Location	Date	Plan-Type	Material	Construction Details	Dimensions in feet	Nesting Boxes and Shape	Remarks
TL 86-45-	Long Melford (Kentwell Hall) Nettlestead (The Chase)	c.1550	S	B	p-r			
TL 74-59-	Ousden Hall	16th cent. 18th cent.						demolished 1955
TM 297550	Pettis Tree (Home Farm)	c.1775	S					
TL 99-38-	Polstead (Pond Fmho)	?18th cent.	S					
TM 390626	Saxmundham (Hurts Hall)		O	B	lan			
TM 11-70-	Stoke Ash (Rectory)	1600	S	B				
TL 74-43-	Stoke by Clare (Grenville Coll)	16th cent.	S		p-r			
TM 11-76-	Thrandeston (Goswold Hall)	17th cent.	S		g			
<b>SURREY</b>								
TQ 04-66-	Chertsey (Hall Ct Fm)	?15th cent.						
SU 938598	Chobham (Lucas Gn Manor Ho)	16th cent.	R	T/F				
TQ 39-47-	Crowhurst (Manor Ho) (Wotton Ho)	c.1920 ?by 1579		S				
TQ 202588	Epsom (Woodcote Pk) Milford Ho	17th cent. 18th cent.	C S	B W/B	cup			
SU 93-43-	Peper Harow (Peper Harow Ho) (Peper Harow Fm)	18th cent. c.1750	O	B B				
TQ 00-47-	Shalford Ho	?15th cent.						
SU 88-48-	Tongham (Tongham Fm) Walworth	1292						monastic
<b>SUSSEX</b>								
TQ 505054	Alciston (Court Ho Fm)	14th cent.	S	F		13x13 12H 60		ruin; 2 walls only
TQ 518019	Alfriston (Frog Firle) Angmering	?16th cent.	S	F/B		20x20		conv(barn)
TQ 077046	(Ecclesdon Manor) (Pigeon Ho Fm)	c.1634	S	F/S (1 wall B)	lan	20x20	297 (L) (rem)	lan replaced 1913 conv(wood store) conv (piggery) conv(chicken coop)
TQ 525045	Berwick Ct	c.1600	S	S	buttr			
TV 558970	Birling Manor Fm	?17th cent.	C	F			(rem)	



*Dovecotes in England*

127

Grid Reference	Location	Date	Plan-Type	Material	Construction Details	Dimensions in feet	Nesting Boxes and Shape	Remarks
TQ 303064	Brighton (Preston Manor)	?1738	R	F/B (orig F)		34x16 17H		demolished c. 1970
TQ 005025	Clymping (Bailiff's Ct)	by 1606	O	B	cup	12 i/d 18H	350	altered 1816 (date stone)
TQ 285146	Danny (Little Danny Fm)	?1595	S	F/B	p-r;lan	20H		
SU 939094	Eartham							
TV 591993	Eastbourne (Motcombe Gdns)	?15th cent.	C	F	c-r		450	conv(tool house)
TQ 471071	Firle (Church Ho)	16th cent.	O	F/B	cup	24 i/d 20H	(rem)	conv(cattle pen); roof in poor cond.
TQ 412123	Hamsey (Hamseyplace Fm)	16th cent.	R	F				conv(?)
TQ 265294	Handcross (Nymans)	20th cent.	O					N.T.
TQ 26-07-	Hangleton (Manor Ho Hotel)	?16th cent.	C	F/C	pot;cup	17 i/d 13H	526	restored 1988 £10,000 conv(garage)
	Hornscroft							
TQ 316165	Keymer (Ockley Manor)	18th cent.	S	B		18x18 25H		conv(lodge)
TQ 08-02-	Kingston Buci	?1291	S	F/S		20x20 12H	(rem)	orig roof gone 1926
TQ 41-10-	Lewes Priory	13th cent.	Cruci	chalk	g	arms 80 30H	4500	demolished c. 1820
TQ 523020	Litlington	?13th cent.	C	S				demolished ?1940
TQ 525026	Lullington Ct Fm		R			14x13	350	?demolished
TQ 557093	Michaelham Priory	?18th cent.	R	S/B	g	25x25 12H	(rem)	?built with medieval materials?
								conv(shop)
TQ 527037	Milton Ct		R	F/B	buttr	27x20	800	?demolished
TQ 535040	Milton Street		S	F		20x20	400	conv(bacon curer); ?demolished
TQ 33-07-	Moulsecombe Place	?17th cent.	O	F/B		10 i/d	(rem)	
TQ 268137	Newtimber Place	c. 1681	O	F/B	p-r;lan;pot	15 i/d 17H	726 (L)	orig 862 N/boxes excellent condition
SU 875022	North Mundham							
TQ 393124	Offham (Coombe Place)	18th cent.	O	F/B	cup	15 i/d 17H	368 (L)	
TQ 303093	Patcham Ct Fmho	?c. 1660	C	F	c-r;cup;pot;buttr	13 i/d 18H	550	orig more n/boxes
TQ 04-18-	Pulborough Rectory	?14th cent.	S	S	lan	20x20	(rem)	

Grid Reference	Location	Date	Plan-Type	Material	Construction Details	Dimensions in feet	Nesting Boxes and Shape	Remarks
TV 504987	Seaford (Chyngton Fm)	?13th cent.	S	F		16x16 15H	600	conv(wood store)
TQ 415240	Sheffield Pk Fm		C	B	cup;pot			roof collapsed 1986 Gd II
TQ 21-05-	Shoreham by Sea	17th cent.	S					
TQ 020186	Stopham (Lea Fm)	15th cent.	R			11x13	(L)	
TQ 058142	Storrington (Parham Pk)	1577-80	C	R	c-r;cup;pot		750 (U)	
TQ 098131	Sullington Manor	?17th cent.	R	R	h-r			
TQ 444039	Tarring Rectory i		S	F/B		20x20	550	conv(tool store)
	ii		S	F/B				demolished
TQ 40-03-	Telscombe		C					demolished c.1920
SU 824188	Treyford Manor Ho	c.1510	R	S		21x15	750 (L)	conv(chicken coop)
SU 83-22-	Trotton Westdean	1626	S	S	4g	25x25 34H	1200 (L)	
TQ 521006	(Charleston Manor)	?12th cent.	C	F	pot	18 i/d 14H	350 (L)	'Alured's Dovecote'
TV 524996	(Westdean Manor)	?14th cent.	C	F		16 i/d 14H	300 (L)	roofless
SU 883063	Westhampnett (Church Ho)	?c.1500	C			14 i/d 15H	550 (L)	roofless
TQ 552038	Winton Ho		S				400	
TQ 155124	Wiston Ho	c.1575	O	S	4g;pot		160	
TQ 30-07-	Withdean Manor		R					demolished 1931
SU 982034	Yapton (Church Fm)		O	F/B	c-r;lan;pot	15 i/d	450	
<b>WARWICKSHIRE</b>								
SP 198457	Admington Hall	17th cent.	R		g			
SP 34-74-	Baginton		S		p-r			
SP 20-78-	Barston	by 1452						demolished
SP 256326	Barton on the Heath (Rectory)	by 1585						demolished
SP 117516	Bidford on Avon		R		p-r;lan			
SP 145568	Billesley	?15th cent.	R	S	2 lans		700	conv (Sunday-school) 19th cent. demolished
SP 30-81-	Burton Dassett	by 1660						demolished
SP 256326	Butlers Marston (Vicarage)	by 1626						demolished
SP 336432	Compton Wynyates	c.1600	O	B	p-r;pot	35H 18 di	600	
SP 04-80-	Cotteridge							demolished 19th cent.
SP 191934	Curdworth (Dunton Hall)	?18th cent.	R	B	2-storey;r-r		(L)	

*Dovecotes in England*

Grid Reference	Location	Date	Plan-Type	Material	Construction Details	Dimensions in feet	Nesting Boxes and Shape	Remarks
SP 48-71-	Dunchurch	by 1546						demolished
SP 28-87-	Fillongley	by 1700						
SP 11-59-	Great Alne (Sheffield Ho)	c.1600	S	B/S	g			
SP 230845	Great Packington (Packington Old Hall)	17th cent.	R	B			1000	
SP 25-45-	Halford (Rectory)	by 1585						demolished
SP 260431	Honington Hall	1682	O					
SP 283443	Idlicote Ho Ilmington	18th cent. by 1617	O				1002	
SP 106585	Kinwarton	c.1320	C	S	c-r;pot	15H 17i/d	600	N.T. 1958
SP 33-55-	Lighthorne (Rectory)	by 1616						
SP 262304	Little Compton Manor	17th cent.	R		4g			
SP 070830	Moseley Hall Hospital	18th cent.	O	B	3-storey	13 i/d 30H		restored by Moseley Soc
SP 370480	Radway Grange							
SP 077511	Salford Priors (Vicarage)	by 1617						
SP 17-55-	Shottery (Manor Ho)	16th cent.	S	S				Manor now a girls' school
SP 190616	Songar Grange	c.1800	S	B/T				
SP 20-55-	Stratford on Avon	1684	R	B	p-r			
SP 10-55-	Temple Grafton (Hillboro' Manor) (Temple Grafton Ct)		C	S		24 di	900	conv(forge)
SP 28-65-	Warwick	by 1538					560	demolished
SP 274600	Wasperton (Manor Fm)	17th cent.	O	B/S				
SP 166583	Wilmcote (Mary Ardens Ho)	?15th cent.	R	S			700	restored
SP 416758	Wolston	by 1523						demolished
<b>WILTSHIRE</b>								
SU 102699	Avebury (Manor Ho)	?c.1550	C	S				
SU 12-30-	Bemerton Fm	c.1850	C	S	2-storey			lwr pt henhouse
SU 07-25-	Bishopstone (Faulstone Ho)	?16th cent.	C	S/F	c-r			
ST 82-61-	Bradford on Avon (The Hall)	c.1610	O	S				
	(Belcombe Ct)	1723	C	S				square base
	Clarendon Park	?18th cent.	O	B	cup			incorporates a clock

Grid Reference	Location	Date	Plan-Type	Material	Construction Details	Dimensions in feet	Nesting Boxes and Shape	Remarks
ST 86-70-	Corsham (Jaggard's)	?c.1657	R	S	h-r	26x20	200	lwr pt cowhouse
ST 95-92-	Crudwell	?17th cent.	C	S				
SU 01-31-	Dinton (Hyde's Ho)	?16th cent	S	S				
ST 89-85-	Foxley (Manor Ho)	16th cent.	S	B/F	p-r;cup	25x25	365 (L)	
ST 919684	Lacock (Wick Fm)	?14th cent.	C	S	pot.		500	
SU 09-85-	Lydiard Millicent	18th cent.	S	B	4g;cup;pot	20x20 30H	1000 (O)	
SU 10-30-	Quidhampton (Wilton Model Fm)	?1850	C					
ST 95-81-	Seagry Manor Fmho	?c.1675						
SU 20-91-	Sevenhampton (Fresden Fmho)	?17th cent.			lan			
SU 17-87-	Stratton St Margaret (Pigeonho Lane)	c.1600	S	S				
ST 91-41-	Tytherington	1810	R					
SU 13-60-	Wilcot (Manor Ho)	1737	C	B	c-r	18H 12 i/d	500 (L)	
<b>YORKSHIRE</b>								
	Barforth Old Hall	?14th cent.	C	S		30H 45cir	300 (O)	ruin
SE 486035	Barnboro' Hall	?17th cent.	O					
NZ 162134	Caldwell	?13th cent.	C					ruin
SK 515989	Conisbrough Castle							
SE 487198	Darrington i (Vicarage) ii	18th cent.	S		p-r			conv (dwelling)
SE 53-99-	East Harlsey	17th cent.	O	B				
SE 99-58-	Elmswell (Manor Ho)	c.1630	R	B				demolished c.1985
NZ 173124	Forcett Park	?17th cent.	O					
NZ 617161	Guisboro' Priory	13th cent.	O					
NZ 364056	Nornby (Vicarage)		C					ruin
SE 899327	North Cave (Manor Fm)	c.1770	O		cup			
SE 20-45-	Otley (Leathley Manor)		R					
TA 13-75-	Reighton Hall	18th cent.	O	B				
SE 469153	Rogerthorpe Manor		R	S		23x14 23H	removed	conv(fruit- store)
SE 885392	Sancton (Houghton Hall)	18th cent.	O					
SE 27-84-	Snape Castle	?1414	S	S	lan	26x26 22H	1500	
SE 36-32-	Temple Newsham	c.1762	R			45x20	1200	conv(cottage) c.1922

Grid Reference	Location	Date	Plan-Type	Material	Construction Details	Dimensions in feet	Nesting Boxes and Shape	Remarks
SE 406193	Wakefield (Huntwich Grange)		S			20x20 18H		
SE 397189	(Sharleston Hall Fm)	?1574						
SE 608493	Walton Hall York (Fulford Hall)	18th cent. c.1750	S S	S B	h-r;cup cup	20x20 18H	365 (L) 750 (L)	

NOTE

It must be stressed that some of the dovecotes listed above may not still be extant. The Ancient Monuments Society's *Newsletter* over the past twelve months has included applications to demolish the following examples:

- H/Worcs: Pebworth (Manor Farm)—18th cent.
- Yorks: Thurnscoe (Low Grange Farm)—17th cent.

Fortunately the dovecote at Haselor Hall (Staffs) was removed last year and re-erected at the Avoncroft Museum of Buildings.

WREAKS CAUSEWAY-END BRIDGE (SD 132 801)

On the tortuous A593 trunk road from West Cumberland to Barrow, a straight causeway crosses the flat, low-lying peats known as White Moss and Wreake Moss southeast of Brough-on-Furness. At the eastern end of the causeway where the road crosses Kirkby Pool, Wreake bridge carries such a volume of traffic that, with no footways, it is hazardous to inspect the carvings on its parapets. The bridge has three arches of local Silurian slate rubble, is about seven yards wide and has been widened by two yards on the downstream side. The parapets are about forty yards long and fifteen inches wide and have been rebuilt in gawn slate. Thus many new coping stones are interspersed among old ones which were re-set to preserve thirty well-carved inscriptions. One clear carving slightly overestimates the distance to the local market town by stating *BRIDLINGTON 1/2 MI.*

Other inscriptions are so weathered that much of the detail is now lost. For example, the north parapet has a heart followed by a barely discernible *KIRKBY MI* as if the carver was anticipating the modern craze for labels implying 'I love...